



BUILDERS & DEVELOPERS

Flower Jn., Jew Street, Ernakulam, Pin - 682 035
info@ferroengineers.in | www.ferroengineers.in



Aluva. Pukkattupady



BUILDERS & DEVELOPERS



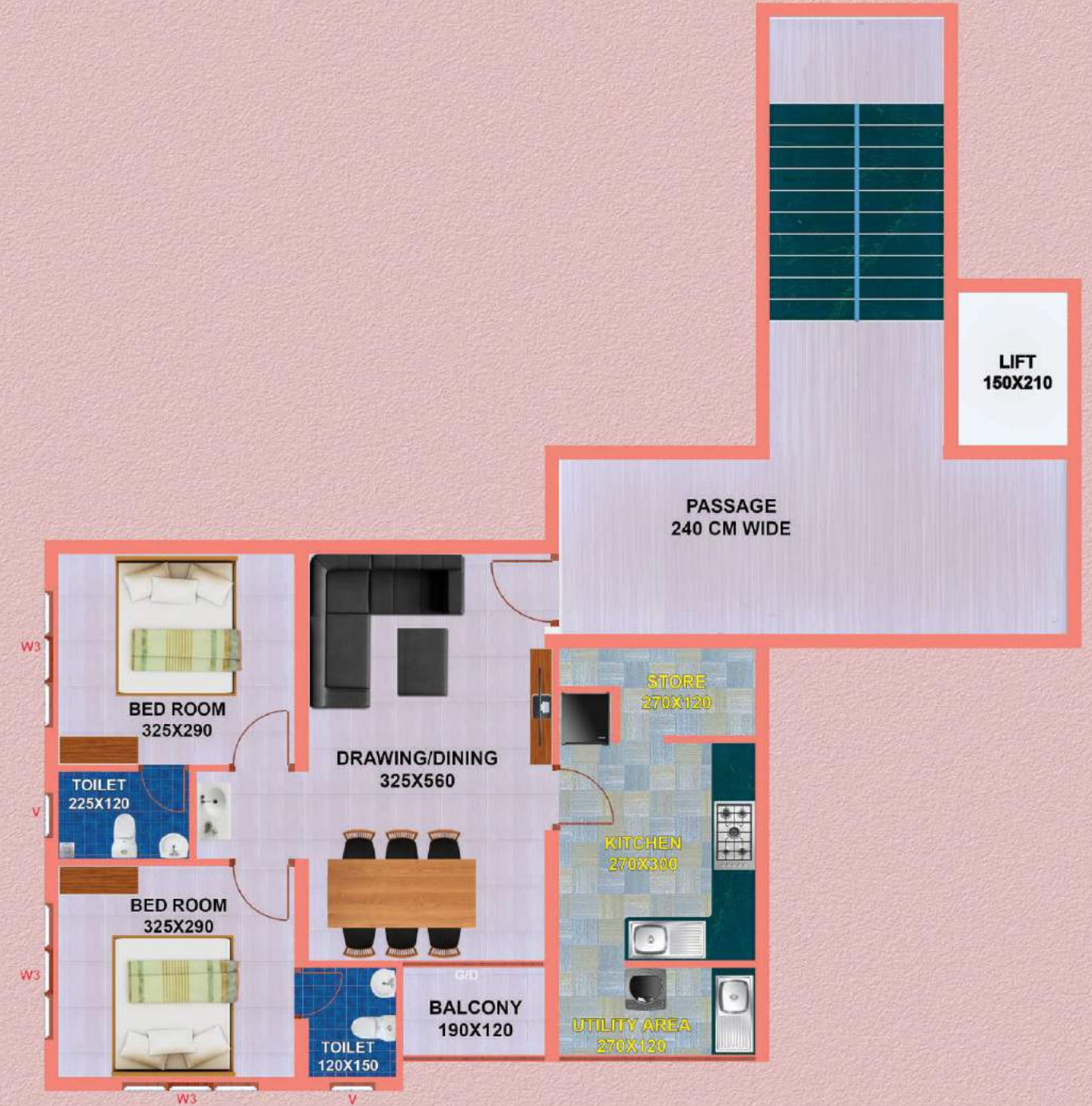
Beyond expectations

The performance of Ferro Builders & Developers since its inception has been nothing short of a miracle. Our growth has been exceptional and in a very short time Ferro agencies & Hardwares developed a robust network of loyal dealers. Our excellent sales record is a testimony to our fine sales team. Our sound logistics infrastructure helps us cater to any volume of requirements. Our reliability, product quality, supply schedule and above all our business ethics have helped us gain the complete trust of our dealers.

Ferro Agencies and Hardwares is one of the leading hardware & tools distributor located at the commercial capital of Kerala, Kochi. Pioneered in selling wide range of products from leading manufactures we had come a long way with a humble beginning since 1983. We now have the widest network in Kerala in General Hardware, Tools, Welding products. With excellent track record, infrastructure and product quality, we hope to peruse excellence in customer satisfaction, while maintaining strong ethical standards.



APARTMENT - A
AREA : 937 SFT



APARTMENT - B
AREA : 937 SFT





APPARTMENT - E
AREA : 937 SFT



APPARTMENT - F
AREA : 937 SFT

Specification

Amenities to delight you

Ferro Fortune apartments is a unique habitat presenting its owners with the best of amenities to make life effortless and enjoyable. The optimum location of the apartments enables the residents to enjoy the entire benefits of an aspiring metro city, at the same time distancing them away from the rush and hustle of the crowd. The six storied building houses ten 2 BHK apartments ready with the newest utilities.

Common Amenities

- Sumptuous & furnished Lobby
- Rooftop Party area
- Solid waste management
- Rainwater harvesting
- 12 tMr. wide front main road and 6 mtr. wide side road
- Car parking for each flat
- All around compound wall with gate
- Paved compound
- 5 Minute drive from NH-47

Super Structure:

- R.C.C. Framed Structure.

Walls:

- Cement Concrete solid blocks plastered with cement mortar

Flooring:

- Vitrified tiles in all rooms with 10cm skirting

Windows and Doors:

- Entrance doors in wood and factory molded skin door for all rooms
- Powder coated Aluminium sliding
- Aluminium louvered ventilators with 3mm glass

Toilets:

- Anti-Skid Ceramic tiles for floor and glazed tiles for walls upto 2meter height
- Concealed piping and CP fittings
- Sanitary fixture matching with tiles
- Hot and cold water taps with shower

Kitchen:

- Kitchen counter with granite top and single bowl single drain stainless steel sink, glazed tiles above counter upto 2 feet.

Car parking:

- Parking on Ground Floor for each flat

Electrical:

- Concealed conduit wiring with copper conductor
- TV Points in Living rooms
- Provision for KSEB single phase connection
- Provision for split AC in master Bedroom
- Geyser points in all bathrooms

Lift:

- One passenger lift with generator backup

Painting:

- Lacquer/Melamine finish entrance door
- OBD for inside ceiling
- Enamel paint for MS grills and wood work
- Weather proof exterior emulsion for exterior walls

Cable TV:

- Provision for Cable TV Connection in living room

Staircase:

- MS Handrails for Staircase and balcony

Water supply:

- Provision for KWA Water connection and collecting in sumps, supply through overhead tank

Security & Safety:

- Round the clock Security
- Standard fire safety features

Options:

- Additions/Modifications can be done if specified at the time of booking



LOCATION MAP



Aluva, Pukkattupady

- | | |
|--------------------------------|----------|
| • Rajagiri Hospital | 5.5 Kms. |
| • Wonderla Amusement Park | 7.3 Kms. |
| • Infopark/SmartCity | 8.5 Kms. |
| • Lulu Mall, Edappally | 13 Kms. |
| • Kaloor International Stadium | 15 Kms. |
| • Nedumbassery Air Port | 21 Kms. |



All specification mentioned herein are true to the best of our knowledge. However, it may subject to change as per discretion of the company